



OSPREY

OWNERS MANUAL



Welcome	3
Introduction	3
Included Equipment	4
Paddle	4
Paddle leash	4
Luxury Kayak Soft Seat	4
Two 9 Inch water-resistant hatches	4
Scupper plugs	4
360° Rod holder	5
Paddle Holder strap	5
Toggle Handles	5
Inbuilt rod holders	5
Rear Bungee cord	5
Installation guides	6
Luxury padded seat	6
360° Rod holder	6
Paddle lock	6
Paddle leash	7
How to install and use a Kayaks2Fish Sit on top trolley	7
Important things to check before you go kayaking	8
Kayaking checklist	8
Kayaking Gear	8
Clothing	8
Essentials	8
Safety	8
Fishing gear	8
Accessories	8

Transportation	9
Roof racks	9
Soft roof racks	9
How to load a kayak by yourself	9
How to strap a kayak to a set of roof racks	10
Roof rack accessories	10
J-Racks	10
Kayaks2fish Universal Kayak carrier	10
Stacking	10
Maintenance	11
Washing your kayak	11
Warped plastic	11
Give Your Kayak a Check-up	11
Storage solutions	12
Kayak Hoist system	12
Kayak Cover	12
Kayak stands	12
Wall racks	12
Basic Safety Tips for Kayaking	13
How to flip your kayak	14
How to get back on a Sit-On-Top	14
Warranty	14
Spare parts	14
FAQ	15-17

WELCOME!

Welcome to the **KAYAKS2FISH** family. We hope you enjoy this kayak and the adventures it may bring.

For 10 years, **KAYAKS2FISH** has focused on one thing — allowing paddlers of any skill level to enjoy the thrill that comes from being surrounded by water and nature.

Visit our website at any time for more information

<https://k2f.com.au/s/ckd>



Visit our blog for tips and tricks when it comes to kayaking

<https://k2f.com.au/s/ckf>



INTRODUCTION

This guide will take you through the components of the Osprey, installation guides and tips and tricks to make your kayaking trip safe and enjoyable.

Some facts about the Osprey Fishing Kayak.



The Osprey is made from High-density polyethylene (HDPE).



It has a user capacity of 110Kg and an overall weight capacity of 150Kg.



The Osprey weighs 19Kg and is 2.7 Meters long.



The hull shape is a V-shaped hull which helps the kayak cut through the water and helps keep it straight while paddling.



Three-year hull warranty.

INCLUDED EQUIPMENT

Paddle



The paddle that comes with the Osprey fishing kayak package is a lightweight 2 piece paddle. It is extendable up to 2.5 metres and can be feathered depending on your preference. The paddle has the feature that it floats when joined together.

Paddle leash

The stretchy red cord that comes with the Osprey is a useful tool to keep the paddle attached to the kayak so in the event, you or a young family member kicks the paddle overboard you will not have it float away.



Luxury Kayak Soft Seat



Designed with your comfort and safety in mind, sink into the high backrest, non-slip contoured padded seat and paddle with pleasure. The unique adjustable design fits most kayaks and comes with two straps for extra stability. Made from durable neoprene + 600D polyester and marine-grade stainless steel brass snap hooks, this kayak seat is built to last.

The Luxury Soft seat also includes a handy backpack attachment.

Two 9 Inch water-resistant hatches

Featured on the Osprey fishing kayak are two 9 inch water-resistant hatches. While only water-resistant they will handle the normal splashing that would occur when out on the water. We recommend a small dry bag for your valuables.



Scupper plugs



The drainage holes in the kayak are also known as scupper holes. The purpose of these holes is to add rigidity to the kayak's hull and to also allow water to drain from the hull of the kayak. The black plugs that come with the Osprey fishing kayak are the plugs for these holes. They are not required to be in for operation but are recommended by Kayaks2fish to be kept in while out on the water as not having them in can reduce the weight capacity of the kayak.

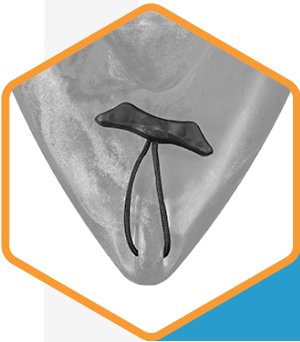


360° Rod holder

The Osprey fishing kayak comes standard with the Kayaks2Fish 360° swivel rod holder.

Paddle Holder strap

The Osprey fishing kayak comes with 2 built-in paddle holders on either side of the kayak under the handles.

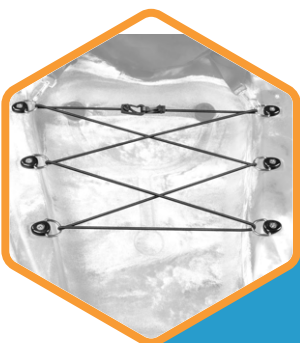


Toggle Handles

The Osprey fishing kayak comes with two comfortable toggle handles which make carrying or using the Sit-On-Top kayak trolley much easier.

Inbuilt rod holders

The Osprey fishing kayak comes with 4 inbuilt rod holders to make it a simple task to transport up to 4 fishing rods at a time.



Rear Bungee cord

The Osprey fishing kayak comes with a rear storage bungee cord to strap down any cooler boxes or gear you want in the back of the kayak.

INSTALLATION GUIDES

LUXURY PADDED SEAT



Ensure the straps on the Luxury seat are loosened, so they can reach the connection points.

1



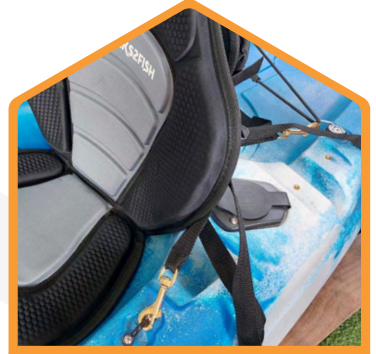
Connect the top two straps to the pad eyes on either side of the kayak.

2



Connect the bottom two straps to the D-rings in the rear storage area.

3



Tighten all straps evenly.

4

Here is a link to an instructional video of the seat installation



<https://k2f.com.au/s/ckg>



360° ROD HOLDER

Step 1

Screw the 360° rod holder base onto the preassigned mounting area.

Step 2

Insert the rod holder tube into the mounting base and turn until it locks in.

To swivel the rod tube, just lift the tube slightly and twist.



Here is a link to an instructional video of the Rod holder installation

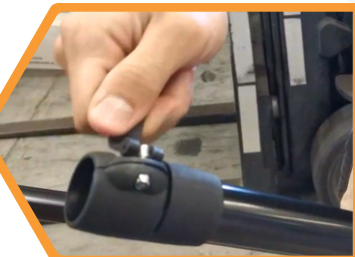


<https://k2f.com.au/s/ckh>



PADDLE LOCK

To tighten the paddle lock,
Twist the paddle locking tab clockwise.



Here is a YouTube video demonstrating



<https://k2f.com.au/s/ckj>

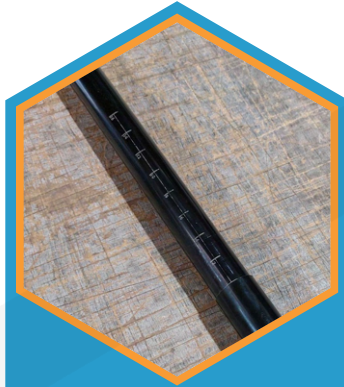


PADDLE LEASH



Disconnect the paddle end of the paddle leash.

1



Disconnect the paddle into two pieces.

2



Place the disconnected paddle into the paddle leash.

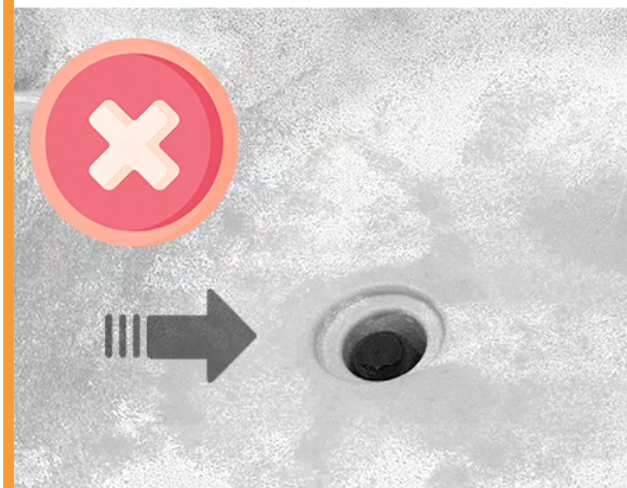
3



Reconnect the paddle leash and paddle.

4

HOW TO INSTALL AND USE A KAYAKS2FISH SIT ON TOP TROLLEY



How to install the Kayaks2Fish Sit on top trolley

- Step 1 Slide the trolley prongs onto the main pole with the prong with the attached strap going on first.
- Step 2 Slide on the black ring, align the holes, then use the bolt and nut to secure.
- Step 3 Insert the spring clip into the main pole until the button pops up.
- Step 4 Install end cap.
- Step 5 Screw on the black knob hand screws.
- Step 6 Install the wheels by pressing the button down, once in all the way, the wheels will be locked in place.

How to use the Kayaks2Fish Sit on top trolley

- Step 1 Remove the scupper plugs from the kayak.
- Step 2 Adjust the scupper poles in line with the scupper holes of the kayak.
- Step 3 Place the kayak on the side.
- Step 4 Insert the scupper poles as far as they can go into the scupper holes.
- Step 5 Turn the kayak the right way up.
- Step 6 Strap the kayak down to the Sit-On-Top trolley.

WARNING:

- Follow the manufacturer's instructions.
- Do not use the trolley unless all components are correctly fitted and adjusted.
- Do not use the trolley if any part is broken, torn or missing.
- Do not use the trolley on a kayak exceeding the length/weight limit.
- The trolley is not for highway use.
- Keep away from children when installing.

Here is a YouTube video demonstrating



<https://k2f.com.au/s/cck>



IMPORTANT THINGS TO CHECK BEFORE YOU GO KAYAKING

- Ensure you have all drainage plugs before you head out.
- Ensure all fittings and fixtures are tight.
- Give the hull a once over to check for any cracks or deformities.
- Check the weather forecast.
- Ensure you have first aid supplies.
- Ensure you have a dry storage bag for your valuables.
- Ensure you have told someone where you are going and when you are expected back.

KAYAKING CHECKLIST

A QUICK LIST TO HELP WITH WHAT TO TAKE OUT KAYAKING.

KAYAKING GEAR

- PADDLE
- PADDLE LEASH
- DRY BAG
- ANCHOR KIT
- KAYAK TROLLEY
- SCUPPER PLUGS
- SEAT / CHAIR

CLOTHING

- SPF RATED SHIRT
- HAT
- SUNGLASSES
- WATER SHOES
- PADDLING GLOVES
- QUICK-DRY PANTS
- RAINCOAT
- FACE SHIELD

ESSENTIALS

- INSECT REPELLENT
- SUNSCREEN
- FIRST AID KIT
- DRINKING WATER
- SNACKS
- WET WIPES
- FISHING LICENSE
- MOBILE PHONE

SAFETY

- LIFE JACKET
- HIGH VISIBILITY FLAG
- SIGNAL MIRROR
- EMERGENCY POSITION INDICATING RADIO BEACON (EPIRB)
- ELEVATED LIGHT POLE
- AIR-HORN
- GPS
- TORCH

FISHING GEAR

- LANDING NET
- MICROFIBER CLOTH/TOWEL
- ROD-LEASH
- ROD HOLDERS
- FISH-GRIP
- MEASURING DEVICE
- CUTTING BOARD
- COOLER BOX
- CRATE
- TACKLE BOXES
- PLIERS
- ROD SLEEVES
- POCKET KNIFE
- BAIT BUCKET
- FILLET KNIFE
- ZIP LOCK BAGS

ACCESSORIES

- TROLLING MOTOR
- BATTERIES (CHARGED)
- TROLLING MOTOR MOUNTING BAR
- SCREWDRIVER
- GOPRO
- FISH-FINDER
- OUTRIGGERS
- SUNSHADE

TRANSPORTATION



ROOF RACKS

A common question we receive is what kind of roof rack is needed to transport a kayak. We recommend a hard roof rack or a trailer for transporting your Osprey fishing kayak.

It can be found here

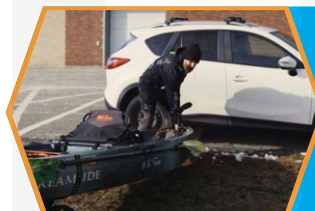
<https://k2f.com.au/s/ckC>



SOFT ROOF RACKS

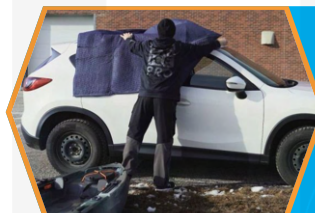
While soft roof racks are a great temporary solution that is easy to install, we recommend having hard roof racks as a permanent solution.

HOW TO LOAD A KAYAK BY YOURSELF



Step 1

Line the kayak up alongside the car as below and remove any loose items or items that could get loose when driving.



Step 2

Spread your moving blanket over the roof of the car tucking it under the roof bars to avoid it moving or if the blanket is large enough to close the corners in the car doors or windows. Make sure the blanket is over each roof rack.



Step 3

Lift the bow and rest it on the edge of the car but high enough that it does not slip easily off. We have demonstrated this on the grass with a kayak that does not have a rudder. If your kayak has a rudder that could get damaged then consider loading in reverse with the stern first.



Step 4

Keeping your hands on the kayak to avoid it slipping, walk to the stern of the kayak, bend your knees, lift the stern and push forward, sliding the kayak further onto the roof until you have about half the kayak on the roof.



Step 5

Carefully lift the kayak at each end to remove the blanket then secure your kayak with tie-downs.

Here is a YouTube video demonstration



<https://k2f.com.au/s/clz>



HOW TO STRAP A KAYAK TO A SET OF ROOF RACKS



Step 1

Lay the Kayak Straps Over the Bars of the Roof Rack.

Thread each strap underneath and around each bar and let the kayak straps lay flat against your vehicle.



Step 2

Place Your Kayak or Canoe on the Roof Rack.

If you are tying the kayak directly to the crossbars of the roof rack, place the boat upside down on the rack.



Step 3

Bring the Kayak Straps Over the Kayak.



Step 4

Secure the Kayak Straps.

Bring the other end underneath the crossbar and back up to meet the buckle. Thread the kayak strap up through the buckle by pushing the button on the clamp and opening a slot for the strap to fit through. Finally, pull the straps to take up the slack.

ROOF RACK ACCESSORIES

We stock two different kinds of mounting options for roof racks to make the kayak more secure or fit more kayaks onto the roof at once.

● J-RACKS

The typical use for the J-racks is to stand the kayaks up on its side to make it easier to transport 2 or more kayaks.

It can be found here

<https://k2f.com.au/s/ckD>



● KAYAKS2FISH UNIVERSAL KAYAK CARRIER

The main use of the universal Kayak carrier is to have a more secure way to strap the kayak down to the roof racks without having to worry about the roof rack scratching the kayak.

It can be found here

<https://k2f.com.au/s/ckF>



STACKING



The Osprey fishing kayak can be stacked with other kayaks. Here is a good example of how they should be stacked.

It is recommended only ever stack the kayaks 3 high at any time. **Please check your roof rack weight capacity before attempting to stack multiple kayaks.**

MAINTENANCE



WASHING YOUR KAYAK

To wash your kayak it is required to wash after each use to wash any saltwater off the kayak as that can cause the metal parts of the kayak to rust.

To wash the kayak you need to use fresh water to thoroughly rinse the kayak then leave it in the sun to dry completely.

It is recommended to store your kayak with a storage cover to keep the dust and spiders out as well as protect your kayak from the elements.

WARPED PLASTIC

If the hull on your boat is distorted due to an accident, improper storage or transportation, correction may be simple: brief exposure to the heat of the sun often restores a hull to its original shape. If that fails, hull shape can often be restored by applying a low heat source (such as a low wattage bulb or hairdryer) to the deformed area. When the hull is pliable enough, hand-shaping can restore the hull.

CAUTION: Overheating can burn you or damage the hull.

GIVE YOUR KAYAK A CHECK-UP

Occasional operational checkups will keep your boat in tip-top condition. Check hatch covers, cables, buckles, straps and other moving parts for wear, and replace them when necessary. Keep all nuts tight and check hardware exit holes for watertight silicone seals. Give your hull and deck a thorough review annually. Light nicks, scratches and scrapes are part of the paddling experience, but deep scratches should be repaired.

On rare occasions (one in a thousand), kayak may have tiny holes around the scupper plug area, which are very hard to notice during the manufacturing process. This can cause a leak and fill the hull with water and can potentially cause the kayak to become unstable and flip. So it's best to take the kayak out for a test run in a shallow area first if you are planning a big trip.

STORAGE SOLUTIONS



KAYAK HOIST SYSTEM

The Kayaks2Fish hoist system is a hoist that allows the user to store the kayak on the roof freeing up ground space. This system is perfect for sheds and garages.

It can be found here

<https://k2f.com.au/s/ckn>



KAYAK COVER

Our covers offer long-term protection from the elements. It is highly recommended a cover if storing the kayak outside.

KEY FEATURES

- 600 denier silver painted waterproof Oxford cloth.
- UV Resistant to protect from harsh Sun.
- 3M Kayaks Cover is suitable for Kayaks up to 2.7m to 3.0m Length.

It can be found here

<https://k2f.com.au/s/ckp>



KAYAK STANDS

Lightweight folding aluminium kayak stands. Ideal as a storage solution or to carry with you when you are washing down your kayak or surf ski at the end of your paddle.

KEY FEATURES

- Padded for kayak protection
- Folds flat when not in use
- Lightweight
- 42cm high when standing
- Sold in a pair
- Weight capacity: 46Kg

It can be found here

<https://k2f.com.au/s/ckq>



WALL RACKS

A Two hook design for convenient storage - rest your kayak on the top hooks and your paddle or other accessories on the bottom hooks. Foam padding to protect your kayak when mounted on the racks. Easy installation - screwdriver required. Fold-away arms - The arms can be folded flat against the wall when not in use to avoid accidents and save space. Max weight capacity 40kg.

It can be found here

<https://k2f.com.au/s/cks>



BASIC SAFETY TIPS FOR KAYAKING



As with all recreational activities, there is always the possibility of injury or death. Always use common sense and follow all safety guidelines at all times.

- Be aware of weather conditions and water temperature. Prepare for changes in weather and the possibility of a capsized. If paddling in cold water, a wet suit or dry suit can keep you warm and comfortable. In warm weather, a long sleeve shirt can provide sun protection.
- Invest in appropriate clothing for your climate. One advantage of sit-inside kayaks is that you can shield yourself from some of the elements, while sit-on-tops leave you more exposed. Dress for the day.
- Beware of off-shore winds that make it difficult to return to shore.
- Always follow the boating rules of the area you're in.
- Never mix alcohol or drugs (prescription or non-prescription) with kayaking.
- Never exceed the weight capacity of your kayak and always check your equipment for wear and tear before you paddle.
- Seek qualified instruction to learn proper paddling techniques, water safety and basic first aid.
- Brush up on self-rescue first in calm, warm, shallow water, and again in more extreme conditions.
- Most importantly, **WEAR YOUR FLOTATION DEVICE**. Australian regulations require that all kayaks have a life jacket on board. Wearing your life jacket will help keep your head above water and add insulation to your body, keeping you warmer in cold water. There are great Life jackets designed specifically for paddlers. Buy one that fits well, and always wear it while you paddle.

It can be found here

<https://k2f.com.au/s/ckt>



- Tell someone your paddle plan, which includes: where you are going, what you will be doing, how long you expect to be gone and how many people are in your party. Then stick to your plan.
- Paddling in the surf zone or rivers can be dangerous. Always wear a helmet.
- Stay hydrated. Always bring plenty of water and food.
- When paddling in a new area, check with the locals regarding currents, shoreline conditions and weather patterns. Plan an "escape" route - an alternative place to get off the water should environmental conditions dictate it. Abiding by these rules will help to make your kayak adventure safe and fun.

HOW TO FLIP YOUR KAYAK

Unfortunately, Capsizing is a natural part of kayaks even though Kayaks2Fish kayaks are very stable fishing platforms it can be unavoidable due to rogue waves or aggressive chop or wake. The best way to stay safe if your kayak flips over, though, is to prepare in advance for that possibility and to make sure you have the right safety equipment. When you are doing any form of kayaking, it is vital that you wear a personal flotation device (PFD) at all times.

It is also best to understand and practice the techniques of exiting and re-entering your kayak in the water.

The first thing to do when your sit-on kayak flips over is to stay calm. Panicking makes you unable to concentrate and can put you in danger.

Your sitting position on the kayak will most likely have you falling sideways into the water. If you do find yourself fully inverted, try to move away from your kayak to avoid banging your head on your kayak as you surface.

Try and remember to grab your paddle as it will be your only means of moving. You can get into a tricky situation if it floats away.

Kicking your legs to provide thrust, push your torso onto the upturned kayak of the kayak and use both hands to grab the edge of the kayak on the far side.

Keeping hold of the kayak, bring your knees up and lean backwards. Your body weight will pull the kayak over to the point where the shape of its hull will take over and the kayak will right itself.

Try practicing in a shallow area first.

HOW TO GET BACK ON A SIT ON TOP

This time, allow your legs to float up to the surface behind you instead of bringing your knees up and leaning back. Your levelled body will keep the kayak from flipping over.

You can pull yourself onto it until you are lying flat with your centre of gravity in the middle of the 'yak. Once you feel stable, roll your body around until your backside is in the seat and then swing your legs up.

WARRANTY

Our warranty information can be found here

<https://k2f.com.au/s/ckv>



SPARE PARTS

In the unlikely event that you break something on your kayak, Kayaks2Fish carry a wide range of spare parts.

<https://k2f.com.au/s/ckx>



FAQ

I have recently purchased an Osprey kayak and was wondering if an aluminum seat could be fitted?

Yes, The Vantage Aluminium seat can be fitted to the Osprey. However, The seat will block the centre hatch making it unable to open while the seat is installed.

How do I install a fish-finder on the Osprey kayak?

A Track Rail system first needs to be installed onto the kayak.

They can be found here

<https://k2f.com.au/s/ckz>



Please note that any drilling or screwing directly into the kayaks hull will void the warranty.

The mounting kit can be found here

<https://k2f.com.au/s/ckz>



What is the weight limit of the kayak?

The Osprey has a max user weight of 110Kg and a max weight capacity of 150Kg.

What is the difference between max weight capacity and max user weight?

Max user weight refers to the person's weight when using the kayak.

Max weight capacity refers to the total weight of the user and gear distributed along the whole kayak.

Can the Ospreys be stacked on a roof rack?

Yes, The Ospreys can be stacked onto a roof rack.

It is recommended that they are stacked upside down.

Can the Osprey fit a MaxDrive™?

No, the Osprey cannot fit a MaxDrive™ pedal system

The kayaks that can fit a MaxDrive™ are NextGen 11, Kronos, Pedal King 12 and the Pedal King 14.

Can you stand up in an Osprey?

The Osprey does not have a stand-up area for your feet. However, the NextGen series has a dedicated stand-up area for extra balance.

How wide are the scupper holes in the Osprey?

The Scupper holes in the Osprey are between 35-40 mm wide. The scupper holes add rigidity to the structure of the kayak and also allow drainage for water on the deck.

What motor is recommended for the osprey kayak?

It is recommended to get a 24lb thrust motor.

They can be found here

<https://k2f.com.au/s/ckB>



The mounting kit can be found here

<https://k2f.com.au/s/ckB>



FAQ

Can the Osprey fit a rudder?

No, the Osprey cannot easily fit a rudder.

Can I fit a cooler box into the Osprey?

Yes, you can fit both the 12L cooler and the soft cooler box into the back of the Osprey.

The 12L cooler can be found here

<https://k2f.com.au/s/ckL>



The Soft cooler box can be found here

<https://k2f.com.au/s/ckM>



Can I bring a child with me on-board

The Osprey does not have a dedicated area for a child to sit.

The NextGen1+1 is designed for an adult and a child to be on board together.

Is the swivel rod holder removable?

Yes, It easily comes out when the locking groove on the rod holder is lined up with the notch in the base.

Are the hatches on the Osprey waterproof?

The hatches are water-resistant and can handle a splash but are not being covered by water and/or submerged.

What size cover do I need for the Osprey?

A 3m cover is best for the Osprey. The cover can be found here.

<https://k2f.com.au/s/ckG>



What do HDPE, LDPE and LLDPE stand for?

- Low-density polyethylene (LDPE) is softer and more flexible than HDPE. It also has a lower melting point (115° C) and is more transparent. Compared to HDPE, it is more likely to crack under stress.
- Linear low-density polyethylene (LLDPE) is a copolymer of ethylene and another longer olefin, which is incorporated to improve properties such as tensile strength or resistance to harsh environments.
- High-density polyethylene (HDPE) is rigid and durable and offers greater chemical resistance. Its higher melting point (135° C) allows it to withstand higher temperatures than LDPE. Its more crystalline structure also results in greater strength. It also has greater opacity which results in greater vibrancy and longer-lasting colour.

VIDEOS

A List of our installation videos can be found here

<https://k2f.com.au/s/ckH>



THANK YOU

CONTACT US



NEWCASTLE, THORNTON 2322.
02 4047 5340.

ADELAIDE, PORT ADELAIDE 5051.
08 7009 4818.

BRISBANE, COORPAROO 4151.
07 2101 2968.

PERTH, NAVAL BASE 6165.
08 6323 8695.

SYDNEY, WETHERILL PARK 2164.
02 8379 5333.

ROCKLEA, ROCKLEA 4106.
07 3557 2178.

MELBOURNE, CAMPBELLFIELD 3061.
03 8579 0979.



<https://k2f.com.au/s/ck4>



sales@kayaks2fish.com

SHARE YOUR EXPERIENCE



<https://k2f.com.au/s/ck5>



<https://k2f.com.au/s/ck6>



<https://k2f.com.au/s/ck7>

