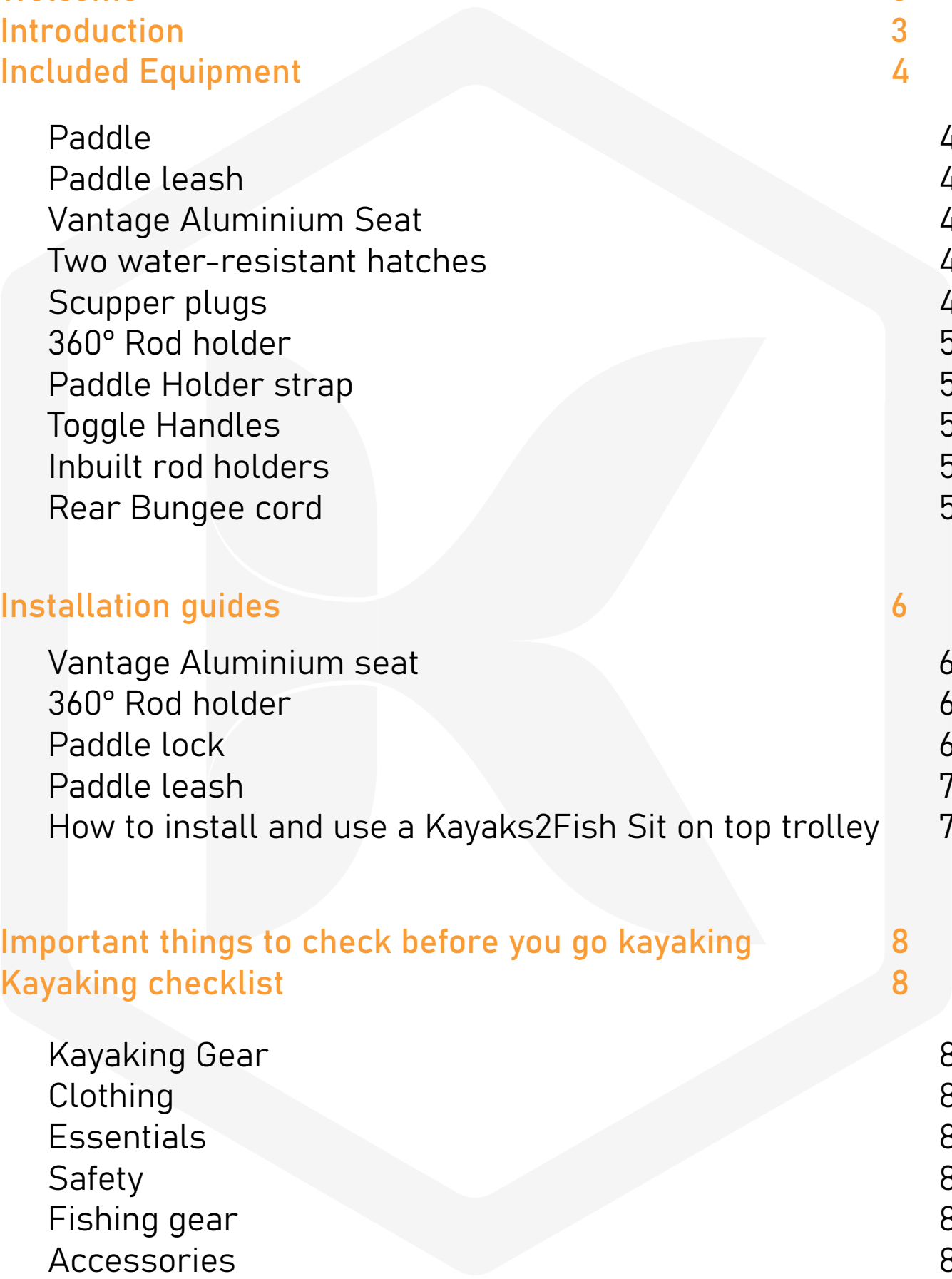


 **KAYAKS2FISH**

NEXTGEN9

OWNERS MANUAL





| | |
|---|----------|
| Welcome | 3 |
| Introduction | 3 |
| Included Equipment | 4 |
| Paddle | 4 |
| Paddle leash | 4 |
| Vantage Aluminium Seat | 4 |
| Two water-resistant hatches | 4 |
| Scupper plugs | 4 |
| 360° Rod holder | 5 |
| Paddle Holder strap | 5 |
| Toggle Handles | 5 |
| Inbuilt rod holders | 5 |
| Rear Bungee cord | 5 |
| Installation guides | 6 |
| Vantage Aluminium seat | 6 |
| 360° Rod holder | 6 |
| Paddle lock | 6 |
| Paddle leash | 7 |
| How to install and use a Kayaks2Fish Sit on top trolley | 7 |
| Important things to check before you go kayaking | 8 |
| Kayaking checklist | 8 |
| Kayaking Gear | 8 |
| Clothing | 8 |
| Essentials | 8 |
| Safety | 8 |
| Fishing gear | 8 |
| Accessories | 8 |

| | |
|---|-----------|
| Transportation | 9 |
| Roof racks | 9 |
| Soft roof racks | 9 |
| How to load a kayak by yourself | 9 |
| How to strap a kayak to a set of roof racks | 10 |
| Roof rack accessories | 10 |
| J-Racks | 10 |
| Kayaks2fish Universal Kayak carrier | 10 |
| Stacking | 10 |
| Maintenance | 11 |
| Washing your kayak | 11 |
| Warped plastic | 11 |
| Give Your Kayak a Check-up | 11 |
| Storage solutions | 12 |
| Kayak Hoist system | 12 |
| Kayak Cover | 12 |
| Kayak stands | 12 |
| Wall racks | 12 |
| Basic Safety Tips for Kayaking | 13 |
| How to flip your kayak | 14 |
| How to get back on a Sit-On-Top | 14 |
| Warranty | 14 |
| Spare parts | 14 |
| FAQ | 15-17 |

WELCOME!

Welcome to the **KAYAKS2FISH** family. We hope you enjoy this kayak and the adventures it may bring.

For 10 years, **KAYAKS2FISH** has focused on one thing — allowing paddlers of any skill level to enjoy the thrill that comes from being surrounded by water and nature.

Visit our website at any time for more information

<https://k2f.com.au/s/clt>



Visit our blog for tips and tricks when it comes to kayaking

<https://k2f.com.au/s/cls>



INTRODUCTION

This guide will take you through the components of the NextGen 9, installation guides and tips and tricks to make your kayaking trip safe and enjoyable.

Some facts about the NextGen 9 Fishing Kayak.



The NextGen 9 is made from High-density polyethylene (HDPE).



It has a user capacity of 120Kg and an overall weight capacity of 160Kg.



The NextGen 9 weighs 20Kg and is 2.8 Meters long.



The hull shape is a V-shaped hull which helps the kayak cut through the water and helps keep it straight while paddling.



Five-year hull warranty.

INCLUDED EQUIPMENT



Paddle

The paddle that comes with the NextGen 9 fishing kayak package is a lightweight 2 piece paddle. It is extendable up to 2.5 metres and can be feathered depending on your preference. The paddle has the feature that it floats when joined together.

Paddle leash

The stretchy red cord that comes with the NextGen 9 is a useful tool to keep the paddle attached to the kayak so in the event, you or a young family member kicks the paddle overboard you will not have it float away.



Vantage Aluminium Seat

With the Aluminium Vantage seat, you can enjoy a cozy and cushioned ride. The mesh fabric allows for proper ventilation and speedy drying, ensuring both you and your seat remain dry throughout the journey.

Two water-resistant hatches

Featured on the NextGen 9 fishing kayak are two 9 inch water-resistant hatch and an 8-inch water-resistant hatch. While only water-resistant they will handle the normal splashing that would occur when out on the water. We recommend a small dry bag for your valuables.



Scupper plugs

The scupper holes in a kayak serve two purposes - to increase hull rigidity and to drain water. The black plugs that come with the NextGen 9 fishing kayak are used to seal these holes, and although not necessary for operation, are recommended to be kept in while kayaking to maintain the weight capacity.

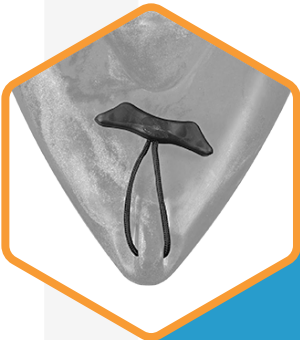


360° Rod holder

The NextGen 9 fishing kayak comes standard with the Kayaks2Fish 360° swivel rod holder.

Paddle Holder strap

The NextGen 9 fishing kayak comes with 2 built-in paddle holders on either side of the kayak under the handles.

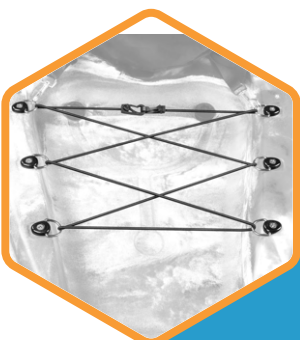


Toggle Handles

The NextGen 9 fishing kayak comes with a comfortable toggle handles which make carrying or using the Sit-On-Top kayak trolley much easier.

Inbuilt rod holders

The NextGen 9 fishing kayak comes with 4 inbuilt rod holders to make it a simple task to transport up to 4 fishing rods at a time.



Rear Bungee cord

The NextGen 9 fishing kayak comes with a rear storage bungee cord to strap down any cooler boxes or gear you want in the back of the kayak.

INSTALLATION GUIDES

VANTAGE ALUMINIUM SEAT



Place the seat in the allocated grooves.

1



Using the bungee cord underneath the seat strap, loop the bungee cord over the clip.

2



Loop the side straps of the chair through the padeye for added security

3



Tighten all straps evenly.

4

360° ROD HOLDER



Step 1

Screw the 360° rod holder base onto the preassigned mounting area.

Step 2

Insert the rod holder tube into the mounting base and turn until it locks in.

To swivel the rod tube, just lift the tube slightly and twist.

Here is a link to an instructional video of the Rod holder installation



<https://k2f.com.au/s/clq>



PADDLE LOCK



To tighten the paddle lock,
Twist the paddle locking tab clockwise.

Here is a YouTube video demonstrating



<https://k2f.com.au/s/clv>

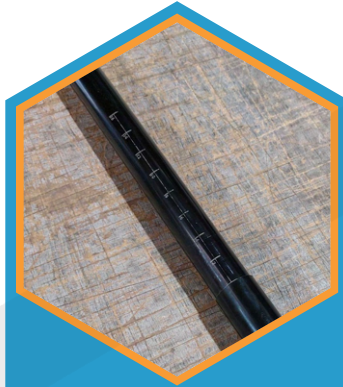


PADDLE LEASH



Disconnect the paddle end of the paddle leash.

1



Disconnect the paddle into two pieces.

2



Place the disconnected paddle into the paddle leash.

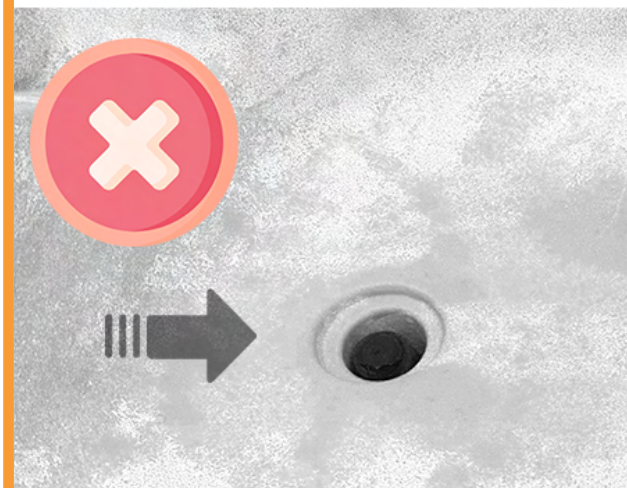
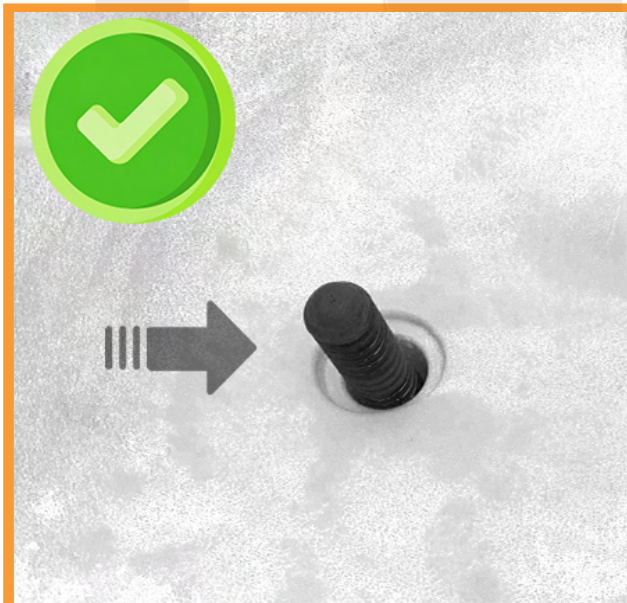
3



Reconnect the paddle leash and paddle.

4

HOW TO INSTALL AND USE A KAYAKS2FISH SIT ON TOP TROLLEY



How to install the Kayaks2Fish Sit on top trolley

- Step 1 Slide the trolley prongs onto the main pole with the prong with the attached strap going on first.
- Step 2 Slide on the black ring, align the holes, then use the bolt and nut to secure.
- Step 3 Insert the spring clip into the main pole until the button pops up.
- Step 4 Install end cap.
- Step 5 Screw on the black knob hand screws.
- Step 6 Install the wheels by pressing the button down, once in all the way, the wheels will be locked in place.

How to use the Kayaks2Fish Sit on top trolley

- Step 1 Remove the scupper plugs from the kayak.
- Step 2 Adjust the scupper poles in line with the scupper holes of the kayak.
- Step 3 Place the kayak on the side.
- Step 4 Insert the scupper poles as far as they can go into the scupper holes.
- Step 5 Turn the kayak the right way up.
- Step 6 Strap the kayak down to the Sit-On-Top trolley.

WARNING:

- Follow the manufacturer's instructions.
- Do not use the trolley unless all components are correctly fitted and adjusted.
- Do not use the trolley if any part is broken, torn or missing.
- Do not use the trolley on a kayak exceeding the length/weight limit.
- The trolley is not for highway use.
- Keep away from children when installing.

Here is a YouTube video demonstrating



<https://k2f.com.au/s/clx>



IMPORTANT THINGS TO CHECK BEFORE YOU GO KAYAKING

- Ensure you have all drainage plugs before you head out.
- Ensure all fittings and fixtures are tight.
- Give the hull a once over to check for any cracks or deformities.
- Check the weather forecast.
- Ensure you have first aid supplies.
- Ensure you have a dry storage bag for your valuables.
- Ensure you have told someone where you are going and when you are expected back.

KAYAKING CHECKLIST

A QUICK LIST TO HELP WITH WHAT TO TAKE OUT KAYAKING.

KAYAKING GEAR

- PADDLE
- PADDLE LEASH
- DRY BAG
- ANCHOR KIT
- KAYAK TROLLEY
- SCUPPER PLUGS
- SEAT / CHAIR

CLOTHING

- SPF RATED SHIRT
- HAT
- SUNGLASSES
- WATER SHOES
- PADDLING GLOVES
- QUICK-DRY PANTS
- RAINCOAT
- FACE SHIELD

ESSENTIALS

- INSECT REPELLENT
- SUNSCREEN
- FIRST AID KIT
- DRINKING WATER
- SNACKS
- WET WIPES
- FISHING LICENSE
- MOBILE PHONE

SAFETY

- LIFE JACKET
- HIGH VISIBILITY FLAG
- SIGNAL MIRROR
- EMERGENCY POSITION INDICATING RADIO BEACON (EPIRB)
- ELEVATED LIGHT POLE
- AIR-HORN
- GPS
- TORCH

FISHING GEAR

- LANDING NET
- MICROFIBER CLOTH/TOWEL
- ROD-LEASH
- ROD HOLDERS
- FISH-GRIP
- MEASURING DEVICE
- CUTTING BOARD
- COOLER BOX
- CRATE
- TACKLE BOXES
- PLIERS
- ROD SLEEVES
- POCKET KNIFE
- BAIT BUCKET
- FILLET KNIFE
- ZIP LOCK BAGS

ACCESSORIES

- TROLLING MOTOR
- BATTERIES (CHARGED)
- TROLLING MOTOR MOUNTING BAR
- SCREWDRIVER
- GOPRO
- FISH-FINDER
- OUTRIGGERS
- SUNSHADE

TRANSPORTATION



ROOF RACKS

A common question we receive is what kind of roof rack is needed to transport a kayak. We recommend a hard roof rack or a trailer for transporting your NextGen 9 fishing kayak.

It can be found here

<https://k2f.com.au/s/ckC>



SOFT ROOF RACKS

While soft roof racks are a great temporary solution that is easy to install, we recommend having hard roof racks as a permanent solution.

HOW TO LOAD A KAYAK BY YOURSELF



Step 1

Line the kayak up alongside the car as below and remove any loose items or items that could get loose when driving.



Step 2

Spread your moving blanket over the roof of the car tucking it under the roof bars to avoid it moving or if the blanket is large enough to close the corners in the car doors or windows. Make sure the blanket is over each roof rack.



Step 3

Lift the bow and rest it on the edge of the car but high enough that it does not slip easily off. We have demonstrated this on the grass with a kayak that does not have a rudder. If your kayak has a rudder that could get damaged then consider loading in reverse with the stern first.



Step 4

Keeping your hands on the kayak to avoid it slipping, walk to the stern of the kayak, bend your knees, lift the stern and push forward, sliding the kayak further onto the roof until you have about half the kayak on the roof.



Step 5

Carefully lift the kayak at each end to remove the blanket then secure your kayak with tie-downs.

Here is a YouTube video demonstration



<https://k2f.com.au/s/clB>



HOW TO STRAP A KAYAK TO A SET OF ROOF RACKS



Step 1

Lay the Kayak Straps Over the Bars of the Roof Rack.

Thread each strap underneath and around each bar and let the kayak straps lay flat against your vehicle.



Step 2

Place Your Kayak or Canoe on the Roof Rack.

If you are tying the kayak directly to the crossbars of the roof rack, place the boat upside down on the rack.



Step 3

Bring the Kayak Straps Over the Kayak.



Step 4

Secure the Kayak Straps.

Bring the other end underneath the crossbar and back up to meet the buckle. Thread the kayak strap up through the buckle by pushing the button on the clamp and opening a slot for the strap to fit through. Finally, pull the straps to take up the slack.

ROOF RACK ACCESSORIES

We stock two different kinds of mounting options for roof racks to make the kayak more secure or fit more kayaks onto the roof at once.

- **J-RACKS**

The typical use for the J-racks is to stand the kayaks up on its side to make it easier to transport 2 or more kayaks.

It can be found here

<https://k2f.com.au/s/ckD>



- **KAYAKS2FISH UNIVERSAL KAYAK CARRIER**

The main use of the universal Kayak carrier is to have a more secure way to strap the kayak down to the roof racks without having to worry about the roof rack scratching the kayak.

It can be found here

<https://k2f.com.au/s/ckF>



STACKING



The NextGen 9 fishing kayak can be stacked with other kayaks. Here is a good example of how they should be stacked.

It is recommended only ever stack the kayaks 3 high at any time. **Please check your roof rack weight capacity before attempting to stack multiple kayaks.**

MAINTENANCE



WASHING YOUR KAYAK

To wash your kayak it is required to wash after each use to wash any saltwater off the kayak as that can cause the metal parts of the kayak to rust.

To wash the kayak you need to use fresh water to thoroughly rinse the kayak then leave it in the sun to dry completely.

It is recommended to store your kayak with a storage cover to keep the dust and spiders out as well as protect your kayak from the elements.

WARPED PLASTIC

If the hull on your boat is distorted due to an accident, improper storage or transportation, correction may be simple: brief exposure to the heat of the sun often restores a hull to its original shape. If that fails, hull shape can often be restored by applying a low heat source (such as a low wattage bulb or hairdryer) to the deformed area. When the hull is pliable enough, hand-shaping can restore the hull.

CAUTION: Overheating can burn you or damage the hull.

GIVE YOUR KAYAK A CHECK-UP

Occasional operational checkups will keep your boat in tip-top condition. Check hatch covers, cables, buckles, straps and other moving parts for wear, and replace them when necessary. Keep all nuts tight and check hardware exit holes for watertight silicone seals. Give your hull and deck a thorough review annually. Light nicks, scratches and scrapes are part of the paddling experience, but deep scratches should be repaired.

On rare occasions (one in a thousand), kayak may have tiny holes around the scupper plug area, which are very hard to notice during the manufacturing process. This can cause a leak and fill the hull with water and can potentially cause the kayak to become unstable and flip. So it's best to take the kayak out for a test run in a shallow area first if you are planning a big trip.

STORAGE SOLUTIONS



KAYAK HOIST SYSTEM

The Kayaks2Fish hoist system is a hoist that allows the user to store the kayak on the roof freeing up ground space. This system is perfect for sheds and garages.

It can be found here

<https://k2f.com.au/s/clC>



KAYAK COVER

Our covers offer long-term protection from the elements. It is highly recommended a cover if storing the kayak outside.

KEY FEATURES

- 600 denier silver painted waterproof Oxford cloth.
- UV Resistant to protect from harsh Sun.
- 3M Kayaks Cover is suitable for Kayaks up to 2.7m to 3.0m Length.

It can be found here

<https://k2f.com.au/s/clD>



KAYAK STANDS

Lightweight folding aluminium kayak stands. Ideal as a storage solution or to carry with you when you are washing down your kayak or surf ski at the end of your paddle.

KEY FEATURES

- Padded for kayak protection
- Folds flat when not in use
- Lightweight
- 42cm high when standing
- Sold in a pair
- Weight capacity: 46Kg

It can be found here

<https://k2f.com.au/s/clF>



WALL RACKS

A Two hook design for convenient storage - rest your kayak on the top hooks and your paddle or other accessories on the bottom hooks. Foam padding to protect your kayak when mounted on the racks. Easy installation - screwdriver required. Fold-away arms - The arms can be folded flat against the wall when not in use to avoid accidents and save space. Max weight capacity 40kg.

It can be found here

<https://k2f.com.au/s/clG>



BASIC SAFETY TIPS FOR KAYAKING



As with all recreational activities, there is always the possibility of injury or death. Always use common sense and follow all safety guidelines at all times.

- Be aware of weather conditions and water temperature. Prepare for changes in weather and the possibility of a capsize. If paddling in cold water, a wet suit or dry suit can keep you warm and comfortable. In warm weather, a long sleeve shirt can provide sun protection.
- Invest in appropriate clothing for your climate. One advantage of sit-inside kayaks is that you can shield yourself from some of the elements, while sit-on-tops leave you more exposed. Dress for the day.
- Beware of off-shore winds that make it difficult to return to shore.
- Always follow the boating rules of the area you're in.
- Never mix alcohol or drugs (prescription or non-prescription) with kayaking.
- Never exceed the weight capacity of your kayak and always check your equipment for wear and tear before you paddle.
- Seek qualified instruction to learn proper paddling techniques, water safety and basic first aid.
- Brush up on self-rescue first in calm, warm, shallow water, and again in more extreme conditions.
- Most importantly, **WEAR YOUR FLOTATION DEVICE**. Australian regulations require that all kayaks have a life jacket on board. Wearing your life jacket will help keep your head above water and add insulation to your body, keeping you warmer in cold water. There are great Life jackets designed specifically for paddlers. Buy one that fits well, and always wear it while you paddle.

It can be found here

<https://k2f.com.au/s/clH>



- Tell someone your paddle plan, which includes: where you are going, what you will be doing, how long you expect to be gone and how many people are in your party. Then stick to your plan.
- Paddling in the surf zone or rivers can be dangerous. Always wear a helmet.
- Stay hydrated. Always bring plenty of water and food.
- When paddling in a new area, check with the locals regarding currents, shoreline conditions and weather patterns. Plan an "escape" route - an alternative place to get off the water should environmental conditions dictate it. Abiding by these rules will help to make your kayak adventure safe and fun.

HOW TO FLIP YOUR KAYAK

Unfortunately, Capsizing is a natural part of kayaks even though Kayaks2Fish kayaks are very stable fishing platforms it can be unavoidable due to rogue waves or aggressive chop or wake. The best way to stay safe if your kayak flips over, though, is to prepare in advance for that possibility and to make sure you have the right safety equipment. When you are doing any form of kayaking, it is vital that you wear a personal flotation device (PFD) at all times.

It is also best to understand and practice the techniques of exiting and re-entering your kayak in the water.

The first thing to do when your sit-on kayak flips over is to stay calm. Panicking makes you unable to concentrate and can put you in danger.

Your sitting position on the kayak will most likely have you falling sideways into the water. If you do find yourself fully inverted, try to move away from your kayak to avoid banging your head on your kayak as you surface.

Try and remember to grab your paddle as it will be your only means of moving. You can get into a tricky situation if it floats away.

Kicking your legs to provide thrust, push your torso onto the upturned kayak of the kayak and use both hands to grab the edge of the kayak on the far side.

Keeping hold of the kayak, bring your knees up and lean backwards. Your body weight will pull the kayak over to the point where the shape of its hull will take over and the kayak will right itself.

Try practicing in a shallow area first.

HOW TO GET BACK ON A SIT ON TOP

This time, allow your legs to float up to the surface behind you instead of bringing your knees up and leaning back. Your levelled body will keep the kayak from flipping over.

You can pull yourself onto it until you are lying flat with your centre of gravity in the middle of the 'yak. Once you feel stable, roll your body around until your backside is in the seat and then swing your legs up.

WARRANTY

Our warranty information can be found here

<https://k2f.com.au/s/clJ>



SPARE PARTS

In the unlikely event that you break something on your kayak, Kayaks2Fish carry a wide range of spare parts.

<https://k2f.com.au/s/clK>



FAQ

How do you secure the seat to the kayak?

Here is a video outlining the installation process for the seat

<https://k2f.com.au/s/cdF>



Does the NextGen 9 come with a seat?

Yes, the NextGen 9 comes with the Vantage Aluminium seat as standard. It allows for more comfortable seating and keeps you dry as you sit off the deck.

Is the NextGen 9 compatible with a fish finder?

Yes, the NextGen 9 can fit a track rail system that can support a fish finder mount and a transducer arm.

A Deployment arm can be found here

<https://k2f.com.au/s/cdF>



The Track Rail system can be found here

<https://k2f.com.au/s/cdK>



An alternative Railblaza deployment arm can be found here

<https://k2f.com.au/s/cdL>



The Railblaza base can be found here

<https://k2f.com.au/s/cdM>



What are the main advantages of the NextGen 9?

- V-shaped hull is more manoeuvrable than a flat hull.
- Comes with the aluminium seat as standard. Which allows you to sit off the deck of the kayak and not have to sit in a small pool of water.
- Only 2.8 metres long and weighs only 20Kg.
- Five year warranty on the hull of the kayak.
- Upgradable as it can fit a rudder and two track rails.
- A tackle box that fits into the middle hatch comes included.
- Much easier to stand up in as it has a dedicated stand-up area that is purposely designed to provide increased balance when standing and can fit the traction pads
- The traction pads can be found here <https://k2f.com.au/s/cdN>
- One eight inch and one nine inch water resistant storage hatches.
- Built in foot braces to help with controlling the kayak while paddling.
- Four built in rod holders, with an additional swivel rod holder
- Six scupper holes to allow easy draining of water on the deck of the kayak
- Bungee cord on the back storage area to keep items strapped down.

FAQ

What is the weight limit of the NextGen 9?

The NextGen 9 has a max user weight of 120Kg and a max weight capacity of 160Kg.

Does the NextGen 9 come with a seat?

Max user weight refers to the person's weight when using the kayak.
Total capacity weight refers to the total weight of the user and gear such as coolers, tackle, tackle boxes, bait and tools distributed along the whole kayak.

Can the NextGen 9 fit a MaxDrive™ pedal system?

No, the NextGen 9 cannot fit a MaxDrive™ pedal system.

The kayaks that can fit a MaxDrive™ can be found here

<https://k2f.com.au/s/cdZ>



Can you stand up in the NextGen 9?

The NextGen 9 is much easier to stand up in as it has a dedicated stand-up area that is purposely designed to provide increased balance when standing and can fit the traction pads.

The traction pads can be found here

<https://k2f.com.au/s/cdN>



How wide are the scupper holes in the NextGen 9?

The scupper holes are between 35-40mm wide. The scupper holes add rigidity to the structure of the kayak and also allow drainage for water on the deck.

What motor do you recommend for the NextGen 9 kayak?

We recommend a 24lb thrust motor.

They can be found here

<https://k2f.com.au/s/cdP>



Can the NextGen 9 fit a rudder?

Yes, the NextGen 9 can be fitted with a rudder.

It can be found here

<https://k2f.com.au/s/cdQ>



Can I fit a cooler box into the back of a NextGen 9?

Yes, you can fit the 12L cooler box and the soft cooler box into the back storage.

The 12L cooler box can be found here

<https://k2f.com.au/s/cdQ>



The soft cooler box can be found here

<https://k2f.com.au/s/cdT>



Can I bring a child with me onboard?

The NextGen 9 does not have a dedicated spot for a child.

The NextGen1+1 is designed for an adult and a child to be on board together.

It can be found here

<https://k2f.com.au/s/cdX>



FAQ

What is the difference between the Osprey and the NextGen 9?

- The Osprey is 1Kg lighter and 10cm shorter than the NextGen 9
- The NextGen 9 is 10cm longer.
- The NextGen 9 is 3cm wider.
- The seat in the NextGen 9 is raised off the deck of the kayak and will allow the user to not get a wet butt.
- 5 years of warranty on the hull of the NextGen 9 vs 3 years for the Osprey.
- The NextGen 9 is upgradable as it can fit a track rail system and a rudder

The Track Rail system can be found here

<https://k2f.com.au/s/cdK>



The Rudder system can be found here

<https://k2f.com.au/s/cdQ>



- The NextGen 9 comes with a tackle box that fits into the centre hatch as a part of the kayak package.
- The NextGen 9 is much easier to stand up in as it has a dedicated stand-up area that is purposely designed to provide increased balance when standing and can fit traction pads.

Traction Pads for the NextGen 9 can be found here

<https://k2f.com.au/s/cdN>



Is the swivel rod holder removable?

Yes, It easily comes out when the locking groove on the rod holder is lined up with the notch in the base.

Are the hatches on the NextGen 9 waterproof?

The hatches are water-resistant and can handle a splash but are not being covered by water and/or submerged.

What size cover do I need for the NextGen 9?

A 3m cover is best for the Osprey. The cover can be found here.

<https://k2f.com.au/s/cdV>



What do HDPE, LDPE and LLDPE stand for?

- Low-density polyethylene (LDPE) is softer and more flexible than HDPE. It also has a lower melting point (115° C) and is more transparent. Compared to HDPE, it is more likely to crack under stress.
- Linear low-density polyethylene (LLDPE) is a copolymer of ethylene and another longer olefin, which is incorporated to improve properties such as tensile strength or resistance to harsh environments.
- High-density polyethylene (HDPE) is rigid and durable and offers greater chemical resistance. Its higher melting point (135° C) allows it to withstand higher temperatures than LDPE. Its more crystalline structure also results in greater strength. It also has greater opacity which results in greater vibrancy and longer-lasting colour.

VIDEOS

A List of our installation videos can be found here

<https://k2f.com.au/s/ckH>



THANK YOU

CONTACT US



NEWCASTLE, THORNTON 2322.
02 4047 5340.

ADELAIDE, PORT ADELAIDE 5051.
08 7009 4818.

BRISBANE, COORPAROO 4151.
07 2101 2968.

PERTH, NAVAL BASE 6165.
08 6323 8695.

SYDNEY, WETHERILL PARK 2164.
02 8379 5333.

ROCKLEA, ROCKLEA 4106.
07 3557 2178.

MELBOURNE, CAMPBELLFIELD 3061.
03 8579 0979.



<https://k2f.com.au/s/ck4>



sales@kayaks2fish.com

SHARE YOUR EXPERIENCE



<https://k2f.com.au/s/ck5>



<https://k2f.com.au/s/ck6>



<https://k2f.com.au/s/ck7>

